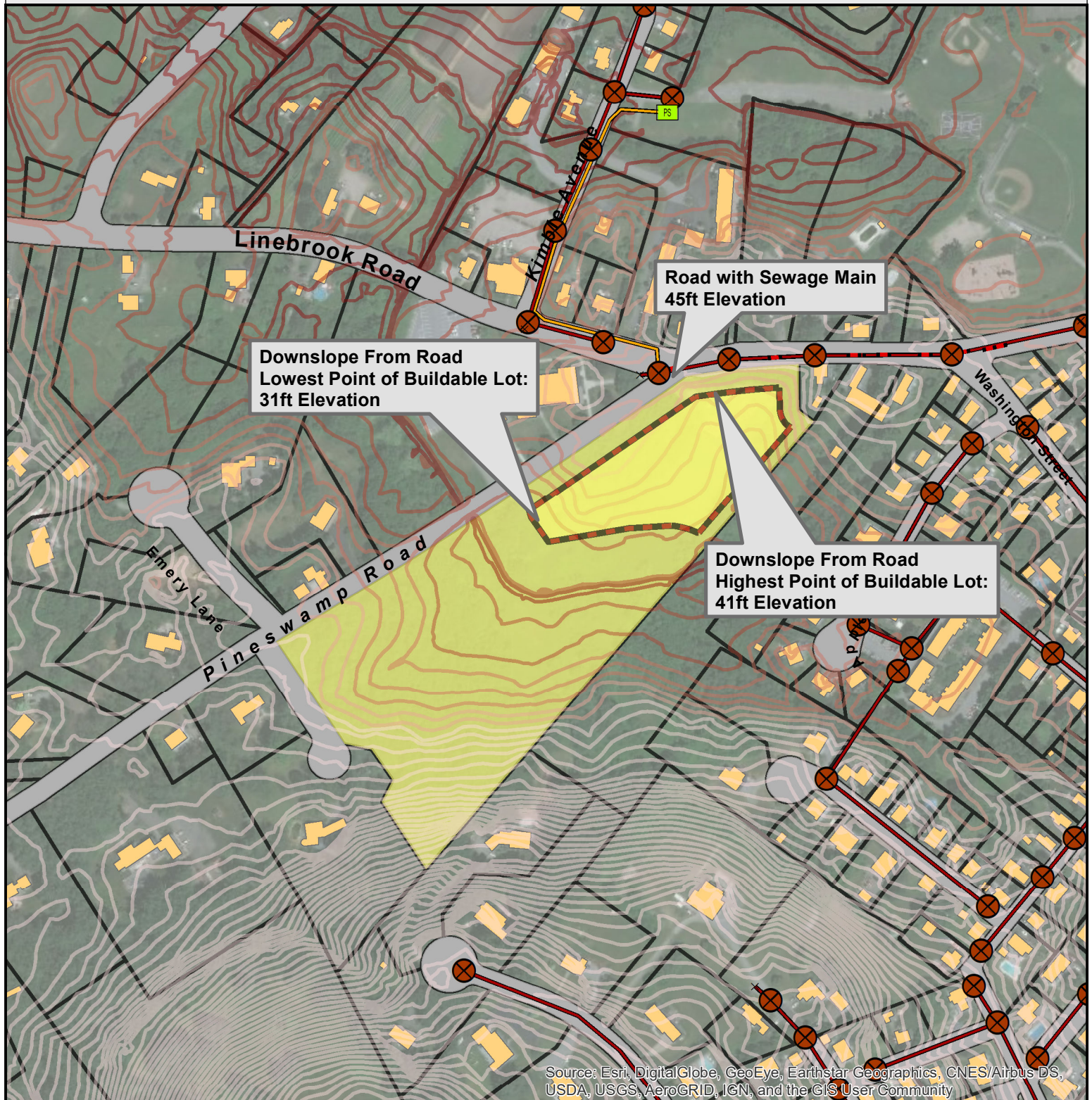


Proposed Ipswich Public Safety Facility -- 4 Pineswamp Road

Sewage Utilities



Source: Esri, DigitalGlobe, GeoEye, Earthstar Geographics, CNES/Airbus DS, USDA, USGS, AeroGRID, IGN, and the GIS User Community



Legend

- | | | |
|------------------------|-------------------------|-----------------------|
| Sewer Gravity Main | Elevation Contour Lines | Subject Site |
| Sewer Pressurized Main | 16.0 - 30.0 ft | Buildable Land Onsite |
| Sewage Manhole | 30.1 - 35.0 ft | Existing Structures |
| Pump Station | 35.1 - 40.0 ft | |
| | 40.1 - 45.0 ft | |
| | 45.1 - 200.0 ft | |

0 150 300 600
Feet



Date: February, 2020
Prepared By: Nicholas LaQuerre
Ipswich, Massachusetts
Department of Planning And Development
Sources: MassGIS, ESRI, Town of Ipswich

This Map is for illustrative purposes only.
The boundary and easement lines depicted
are not surveyed and are not necessarily to scale.